



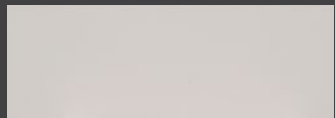
# RIVER'S EDGE APARTMENTS

53 & 57 Riverview Drive  
Chatham, ON

## WHEATLEY

1008 sq ft

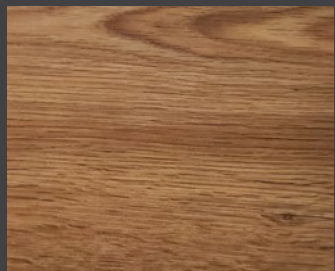
The floor plan illustrated here  
uses finishes from our exclusive  
**Palette One** collection, and  
include:



**CABINETRY:**  
FLAT PANEL



**COUNTERS:**  
QUARTZ



**FLOORING:**  
LUXURY  
VINYL PLANK

Palette One finishes are on  
levels 1 & 3.



All suite measurements are preliminary based on current building  
concept and unit configurations and are subject to change.  
[riversedgeapartments.ca](http://riversedgeapartments.ca)



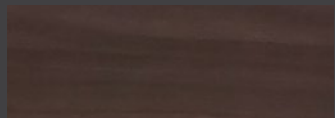
# RIVER'S EDGE APARTMENTS

53 & 57 Riverview Drive  
Chatham, ON

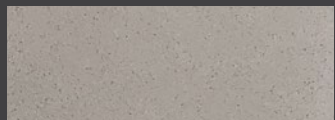
## WHEATLEY

**1008** sq ft

This suite is also available with  
finishes from our **Palette Two**  
collection, and include:



**CABINETRY:**  
FLAT PANEL



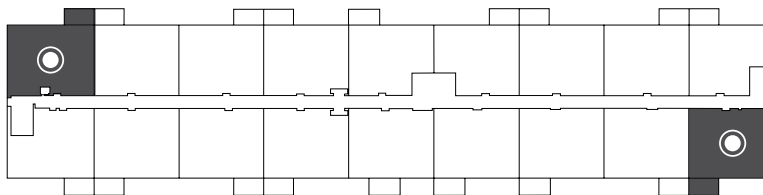
**COUNTERS:**  
QUARTZ



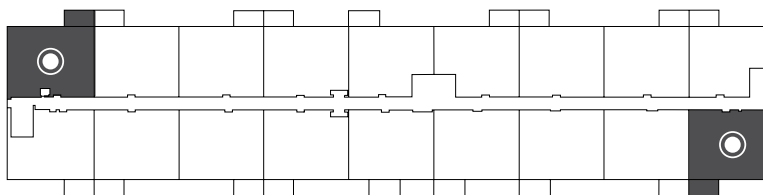
**FLOORING:**  
LUXURY  
VINYL PLANK

Palette Two finishes are on  
levels 2 & 4.

### Second Floor Suites 205 & 214



### Third Floor Suites 305 & 314



### Fourth Floor Suites 405 & 414

