



# BROOKSIDE TERRACE APARTMENTS

118 & 120 Tilbury Avenue,  
Bedford, NS

## HARBOUR WALK 1505-1538 sq ft

The floor plan illustrated here includes these finishes:

### CABINETS:



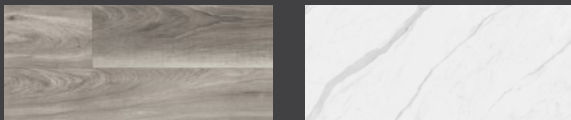
White    High-gloss White    Charcoal

### COUNTERS:

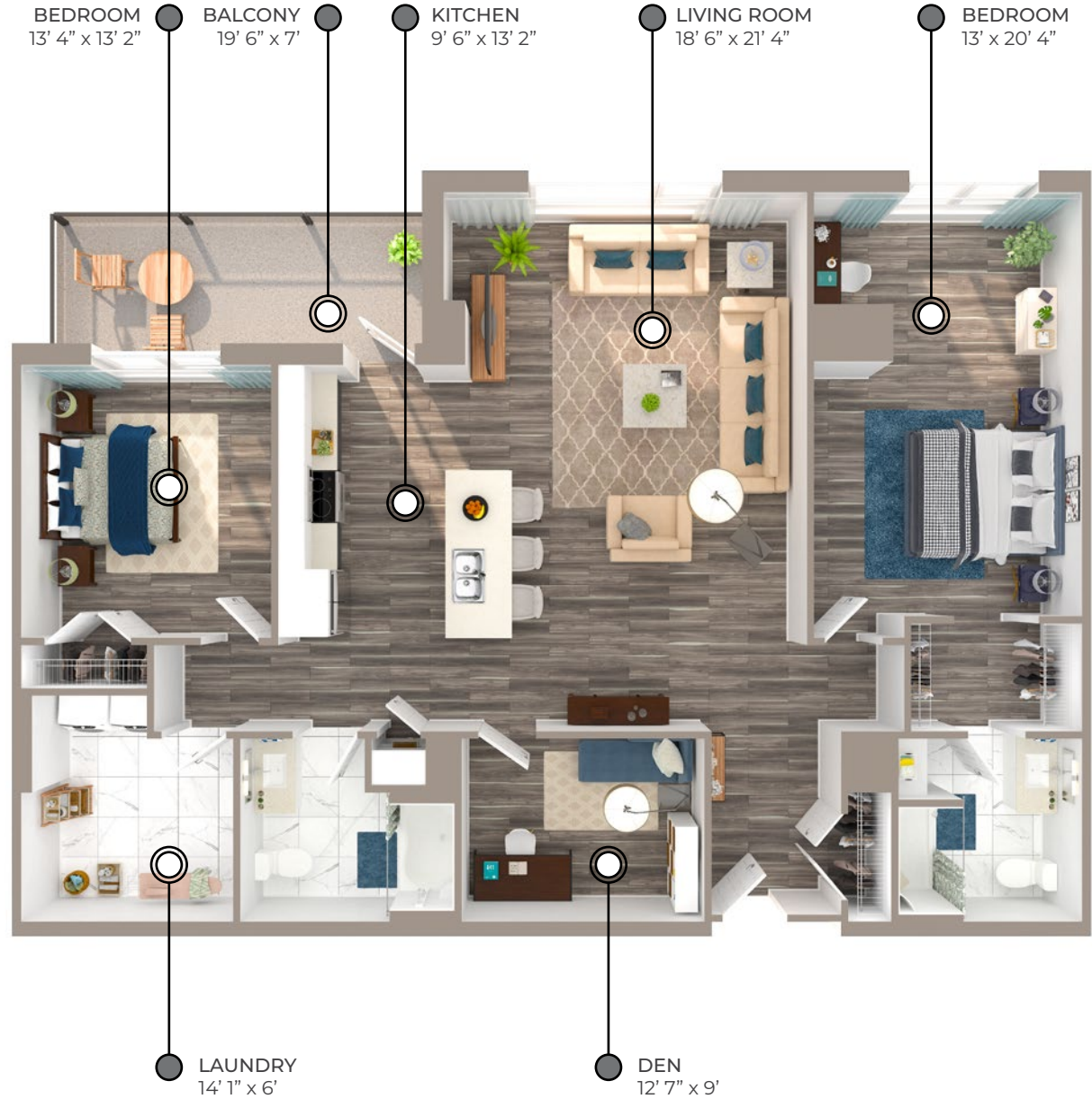


Laminate    Quartz

### FLOORING:



Luxury vinyl plank    Ceramic tile



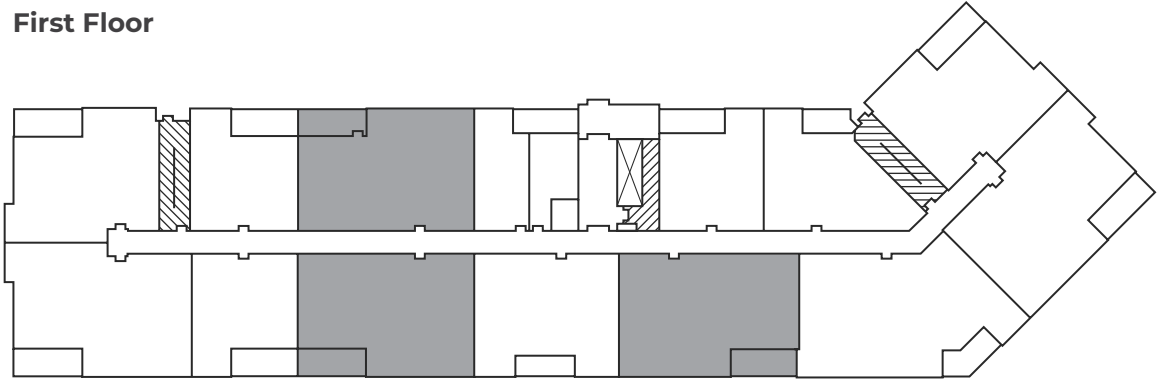
Please note, all floor plans and photos are provided for illustrative purposes only. **ALL MEASUREMENTS ARE APPROXIMATE.** Actual layouts may be different than shown and could vary in size and scale.

118 & 120 Tilbury Avenue,  
Bedford, NS

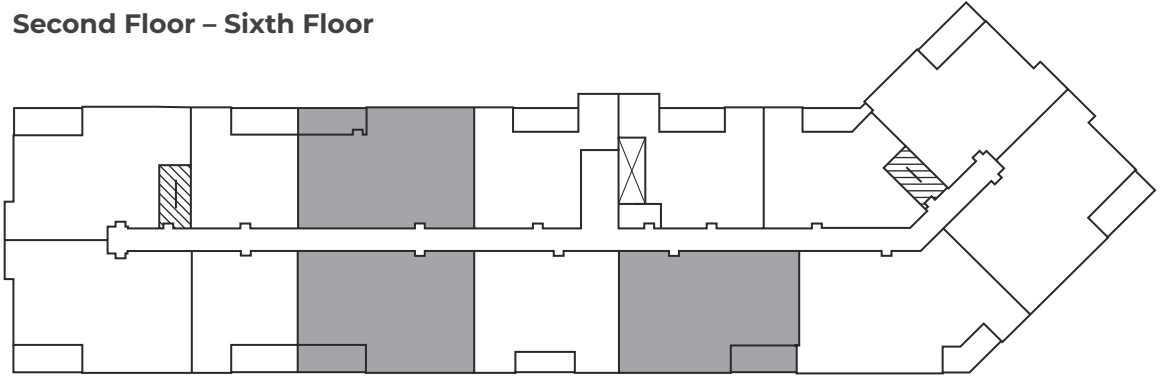
**HARBOUR WALK**  
**1505-1538** sq ft

**118 Tilbury Avenue**

**First Floor**



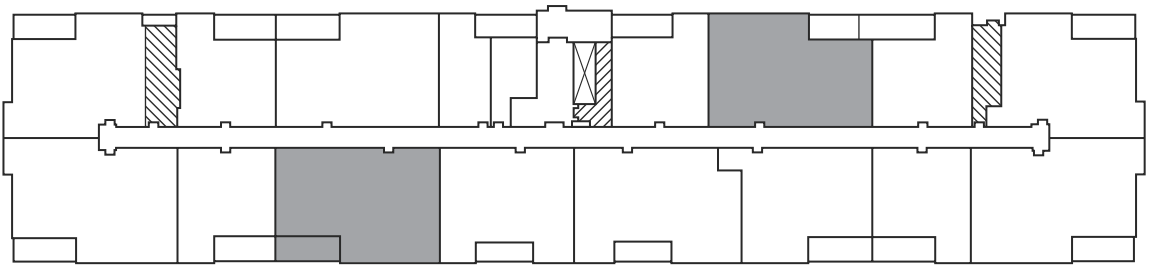
**Second Floor – Sixth Floor**



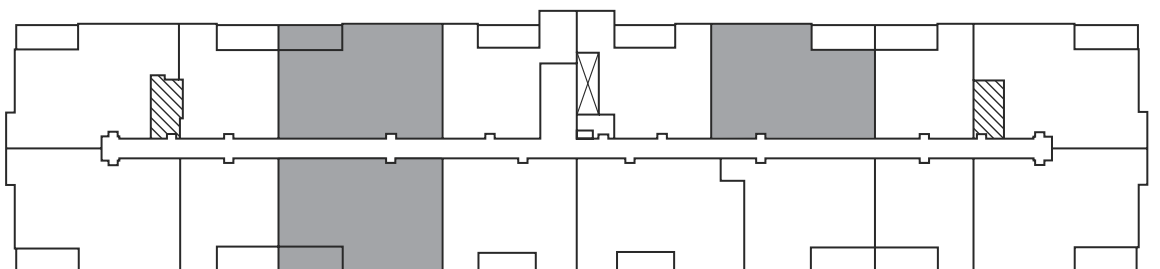
☒ Elevator ☒ Stairwell

**120 Tilbury Avenue**

**First Floor**



**Second Floor – Sixth Floor**



☒ Elevator ☒ Stairwell