

# BLISS

1 BEDROOM, 1 BATHROOM

770 sq. ft.



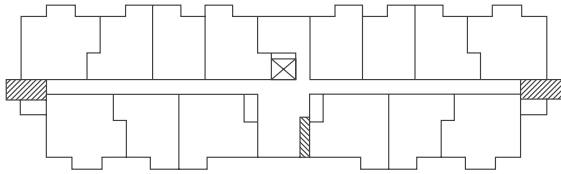
## Room Dimensions

1 Kitchen/Dining	10' 3" x 9' 4"	5 Bedroom	11' 6" x 12' 3"
2 Living Room	11' 6" x 15' 1"	6 Laundry	5' 7" x 5' 9"
3 Nook	5' 9" x 9'	7 Balcony	11' 6" x 5'
4 Bathroom	6' 3" x 11' 3"		



## Floor One

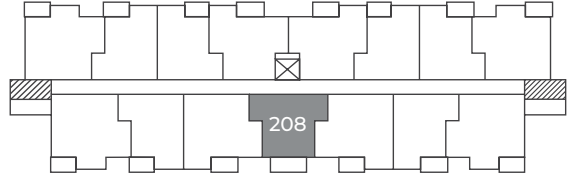
GEORGE STREET VIEW



PARKING LOT VIEW

## Floor Two

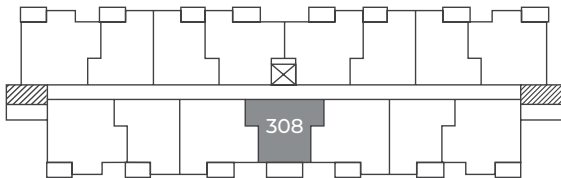
GEORGE STREET VIEW



PARKING LOT VIEW

## Floor Three

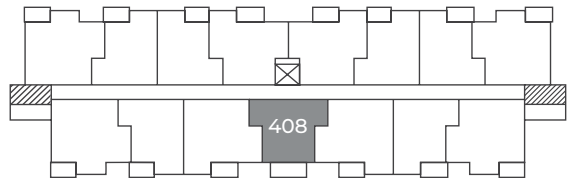
GEORGE STREET VIEW



PARKING LOT VIEW

## Floor Four

GEORGE STREET VIEW



PARKING LOT VIEW

Please note, all floor plans and photos are provided for illustrative purposes only. ALL MEASUREMENTS ARE APPROXIMATE. Actual layouts and finishes may be different than shown and could vary in size and scale.

